



# Tackle That Fat

## SculpSure®

A Smarter Way to Sculpt™

### Blitz through your offensive fat!

SculpSure helps you safely reduce stubborn fat in problem areas such as the belly, love handles, back and thighs—with a treatment plan that is customized to the results you desire.

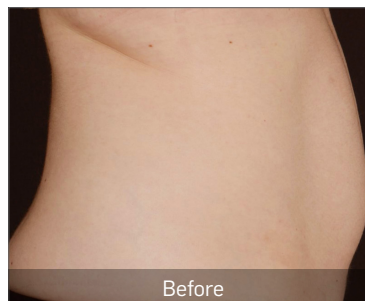
Call for your consultation today!

(936) 657-4565

CONROE  
FAMILY DOCTOR



*caring for your family as we would our own*



Before



12 weeks after 2<sup>nd</sup> SculpSure series

AREAS TREATED: Upper & lower abdomen, left & right love handles  
*Courtesy of C. Torgerson, MD*



Before



12 weeks after 2<sup>nd</sup> SculpSure series

AREAS TREATED: Upper & lower abdomen, left & right love handles  
*Courtesy of S. Doherty, MD*

[www.conroefamilydoctor.com](http://www.conroefamilydoctor.com)

508 MEDICAL CENTER BLVD. | STE. 300 | CONROE, TX 77304

Advertisement. Individual results may vary and are not guaranteed. SculpSure is intended for non-invasive fat reduction of the submental (under the chin) area, abdomen, flanks, back, inner and outer thighs. SculpSure is not a weight loss solution or for people who are obese. Model for illustrative purposes only. ©2017 Hologic, Inc. All Rights Reserved. Cynosure and SculpSure are registered trademarks of Hologic, Inc. A Smarter Way to Sculpt is a trademark of Hologic, Inc. Hologic, Inc. owns exclusive rights to photography. Use of photography without written permission of Hologic is prohibited. AMP-2065 12/17